

It is again that time of the year for the annual Scout newsletter and program updates. For those of you that are rental users or new users within the first year of Scout, you will be getting your updates sent to you and upon the installation of that update, your Scout program will be changed to include the new features. If you purchased your version of Scout and are past your first year, you will need to get on an update plan in order to get the updated version of Scout. Please be sure to read the information below on what has all changed in Scout to be sure you want those features. Also, before you do install the updated version, make sure you make a good backup!

Company News

In last year's newsletter, bad times were predicted for the dairy industry and all aspects of the economy. This was not a statement that took great foresight; everyone could see that things were going badly for many aspects of life in the USA and the world. And now, we have all lived through the last 12 months. On the good side, it looks that finally milk prices are going up somewhat. At least the monthly losses many have had for this year will be less. No one knows if the bottom of this recession has been hit or if things are going to spiral down again after a brief and temporary glimmer of hope. We all realize that there is no clear crystal ball to predict the future. We are all hoping that 2010 will have milk prices high enough so dairies can begin to gain back equity and that a general stability will settle in the economy so we can somewhat accurately anticipate what will happen and when.

We have managed to maintain our level of employees despite some decrease in revenue. Also, the sale of part of the shares of VAS has gone through. Koepon Holding (owners of Alta Genetics) and we are working together to make this a better and stronger company. To this end we have hired more support people who will be starting to work with us this fall. We are also making in-roads to working with dairies in China, Russia and Germany, mostly through our expanded contacts made possible by our association with Alta.

All those in every section of the dairy business are watching technological changes that are occurring. Sexed semen has come to the market and many believe it is one of the major causes of lowered heifer prices. Genomics (DNA testing) is coming to the breeding industry and potentially could make big differences in the semen trade. All this coupled with increased government intervention into almost all aspects of the life of dairyman and those working in dairy allied industries, makes continuing in business "very interesting" if not to say scary.

We all seemed to be carried forward by the fact that people still want to eat. We hope they will be able to continue to consume the produce that modern agriculture that has been able to so aptly (and inexpensively) provide for the last 60 years. In 2007 we wrote about increased efficiencies in the dairy industry. At the end of WWII, there were 25.5 million milk cows in the USA; today there are around 9 million. Milk production per cow has increased about 4 times over the same time span. The amount of feed it took to produce one glass of milk in 1945 is now producing about $2\frac{2}{3}$ glasses of milk. Others have taken this further to calculate how much less carbon, methane, nitrogen and almost all other "offensive" environmental problems that are said to be associated with modern agriculture exist today. The problem is that while many of us know these facts, it is difficult to get this message out and heard by today's public.

Contents:

Contents:	2
Windows 7	2
BREDSUM	3
Conception Options	3
Pregnancy Risk	3
ALERTS	4
Making a List from a Section of a ScatterGraph	6
CHKFILE Enhancement – 1 List of Un-used ID numbers	6
CLEANUP Additions	7
Importing Suggested Matings	8
Pocket CowCard	9

Windows 7

Based on our testing, Dairy Comp 305 and Scout are working properly with Windows 7. There may still be some minor display issues, mainly due to the expanded borders of Windows 7 forms. The pick lists and default form displays might need to be adjusted using SETUP to select different fonts, depending on your display settings. We will likely continue to make adjustments over the next few months, both internal, and possibly user defined adjustments via SETUP. SETUP can be accessed from the FILE menu by selecting the PROGRAM SETUP option.

Depending on the User Access Control settings, some users may need to set the Compatibility Mode to allow Scout to properly run a webupdate. These steps seem to fix the problem:

1. From Explorer, locate and then right click ScoutWin.exe
2. Select "Troubleshoot Compatibility"
3. Select "Try recommended settings"

By default most users would not need to make any registry setting adjustments. We do not recommend users update to Windows 7 just for the sake of updating, but we have no concerns for those users who choose to do so.

32bit versus 64bit Operating Systems

64-bit operating systems are becoming more common for new computers. Be sure to ask your computer representative if the computer is a 64-bit or 32-bit system when upgrading. Valley Ag has worked hard to make sure that our software is 64-bit compatible. We do still recommend staying with a 32-bit platform due to the current lack of support for many common programs.

If you have any questions or are considering upgrading, please feel free to give us a call and we can discuss options with you.

BREDSUM

Conception Options

The various conception options under BREDSUM now display a column with the 95% Confidence Interval for each of the categories. An example (BREDSUM\B) is shown below. This BREDSUM graph can be found under the RPR+CUL menu as the CONCEPTION RATE option.

Bred Number	95% CI	%Conc	#Preg	#Open	Other	Abort	Total	%Tot	SPC
=====	=====	=====	=====	=====	=====	=====	=====	=====	=====
1	39-42	41	994	1459	167	97	2620	33	2.5
2	30-34	32	480	1025	73	55	1578	20	3.1
3	28-34	31	340	758	47	49	1145	14	3.2
4	26-33	29	233	559	43	25	835	10	3.4
5	26-34	30	170	401	24	19	595	7	3.4
6	24-33	28	107	269	31	11	407	5	3.5
7	22-33	27	64	171	33	10	268	3	3.7
8	21-34	27	42	114	16	4	172	2	3.7
OTHERS	14-22	18	63	293	53	13	409	5	5.7
TOTALS	32-34	33	2493	5049	487	283	8029	100	3.0

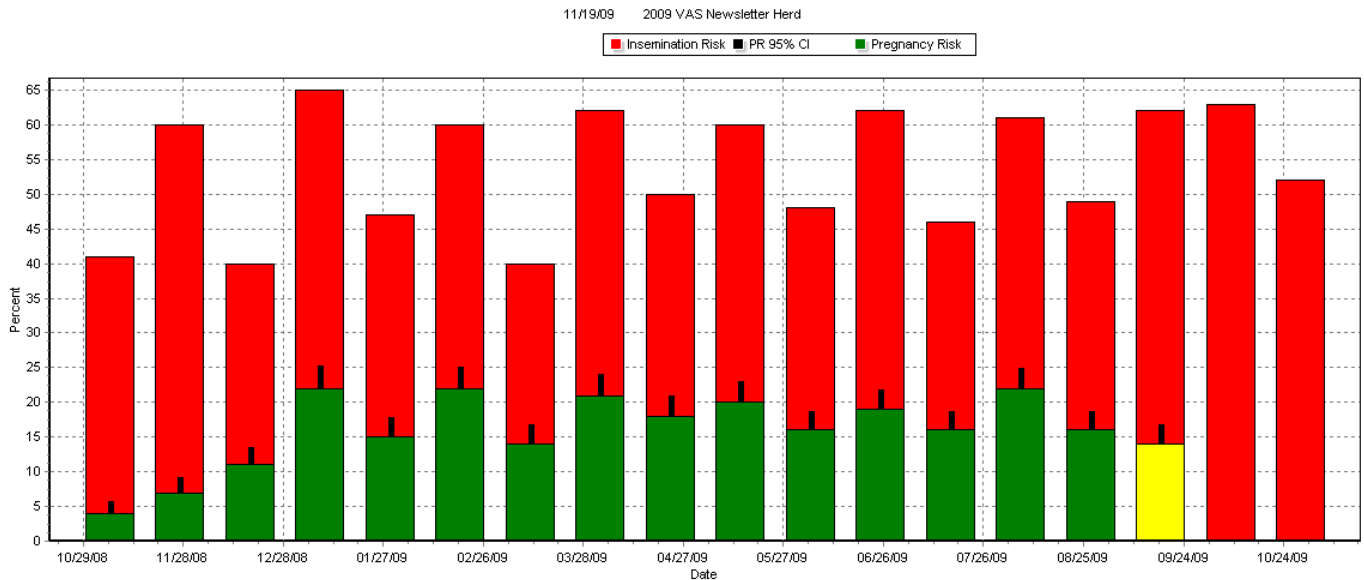
Also, as with SUM, clicking on the vertical axis in a BREDSUM graph will allow setting of minimums and maximums.

Pregnancy Risk

The BREDSUM “Pregnancy Risk” option (found under the RPR+CUL menu) now flags intervals where the Pg Elig column is less than 90% of the Br Elig column, allowing more awareness of the existence of unknown outcomes for animals that received inseminations. On the Grid and Report views there is an asterisk (*) in any line where there are more than 10% unknown outcomes. On the Graph, the preg risk bar is displayed in yellow. Examples are shown below.

BREDSUM, Pregnancy Risk

Date	Br Elig	Bred	Pct	Pg Elig	Preg	Pct	Aborts
=====	=====	=====	=====	=====	=====	=====	=====
:							
7/16/09	736	340	46	722	114	16	4
8/06/09	793	487	61	775	174	22	12
8/27/09	775	376	49	753	123	16	1
9/17/09	836	518	62	* 626	87	14	0
:							
-----	-----	-----	-----	-----	-----	-----	-----
Total	10948	5883	54	10578	1759	17	198



ALERTS

ALERTS is a new command that allows messages (“alerts”) to be sent to the Scout user. Alerts can be generated in a variety of ways:

- Generated by the program:
 - Notify the user of an error
 - Downloaded by CONNECT
 - Downloaded by the web updater
 - Messages from Valley Ag Software about available updates or other information
- User-created as a reminder for a future event

The user-created alerts also have an optional setting for an "activation" date that will suppress the display of the alert until the desired date for display.

Usage

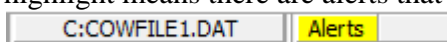
ALERTS\E will enable ALERTS

ALERTS allows alerts to be viewed, created, edited, deleted, etc.

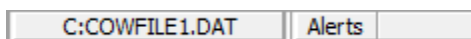
Alerts are stored in the program folder in DCALERTS.TXT.

To access the ALERTS option, you will need to go to a CowCard for any cow and in the upper right corner, enter the word ALERTS in the CowCard command line. The presence of alerts is displayed in the bottom status bar of Scout. Clicking on Alerts in the status bar will bring up the ALERTS dialog box (same as ALERTS on the command line).

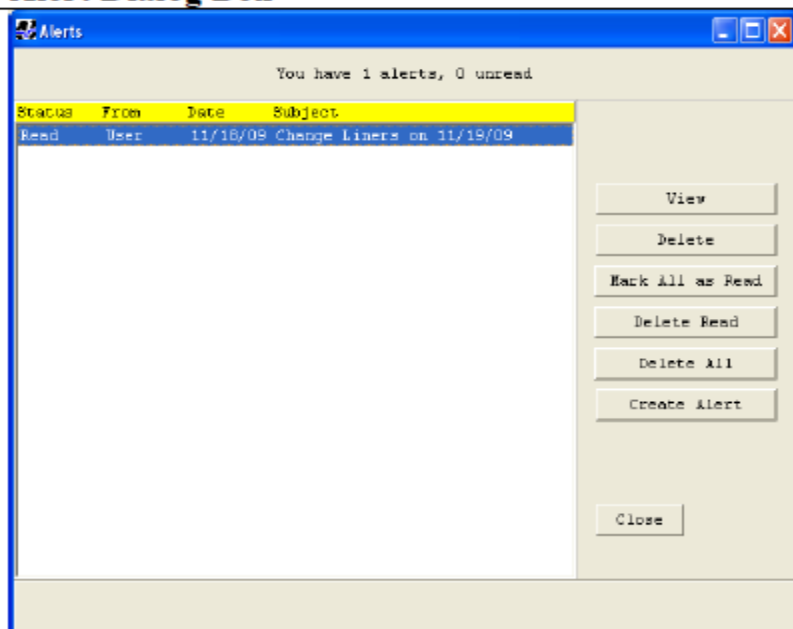
Yellow highlight means there are alerts that have not yet been read.



No highlight means there are alerts, but all have been read.



Alert Dialog Box



The above picture shows the ALERTS dialog box. Currently there is one alert shown:

Status	From	Date	Subject
Read	User	11/18/09	Change Liners on Thursday 11/19/09

- It has been read
- It is from the "User"
- The date is 11/18/09
- Subject is Change Liners on 11/19/09

View	Views the highlighted Alert
Delete	Deletes the highlighted Alert
Mark All as Read	Marks all Alerts as Read
Delete Read	Deletes all "Read" Alerts
Delete All	Deletes All Alerts
Create Alert	Allows creation of an alert
Close	Closes the dialog box
Status Display	<ul style="list-style-type: none"> • Read means the Alert has been Read (Viewed) • UnRead means the Alert has not yet been Read • Pending means the optional activation date has not yet been reached

Creating or Editing Alerts

The above dialog box appears if the Create Alert button is clicked.

A similar box appears if the View button is clicked, View also allows editing of an existing alert.

The above illustrates the final result after creating or editing an alert.

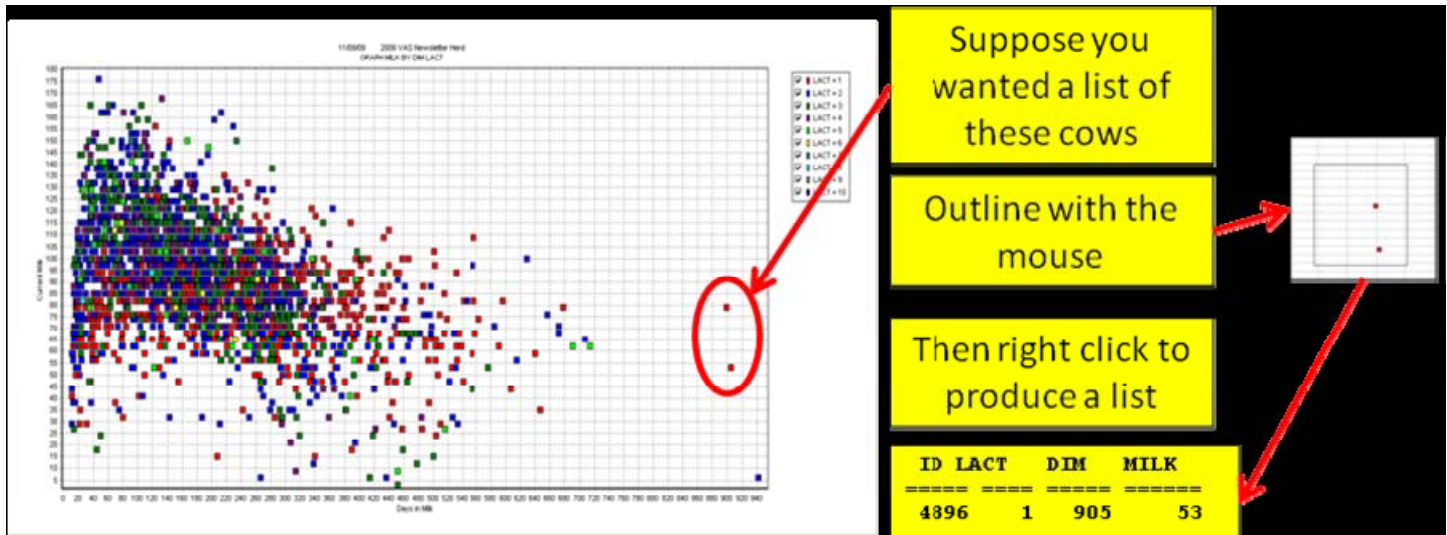
Buttons

- Save Saves changes
- Cancel Ignores any changes and exits
- Delete Deletes the alert

Making a List from a Section of a ScatterGraph

There is a new option available in scattergraphs to allow the making of lists from a portion of the graph. This option can be accessed by zooming in on the desired portion of the graph and right clicking to produce the list.

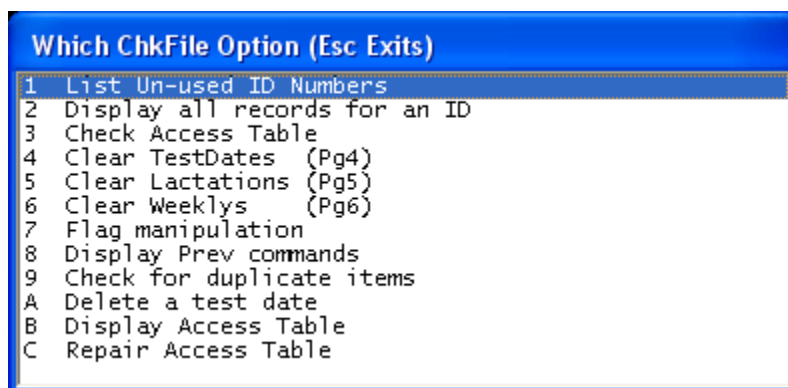
The command for the below graph was GRAPH MILK BY DIM LACT, which can be found under the PROD menu as the GRAPH CURRENT MILK option. Note the list that was created had the items (ID, MILK, DIM, LACT) that were contained in the original GRAPH command.

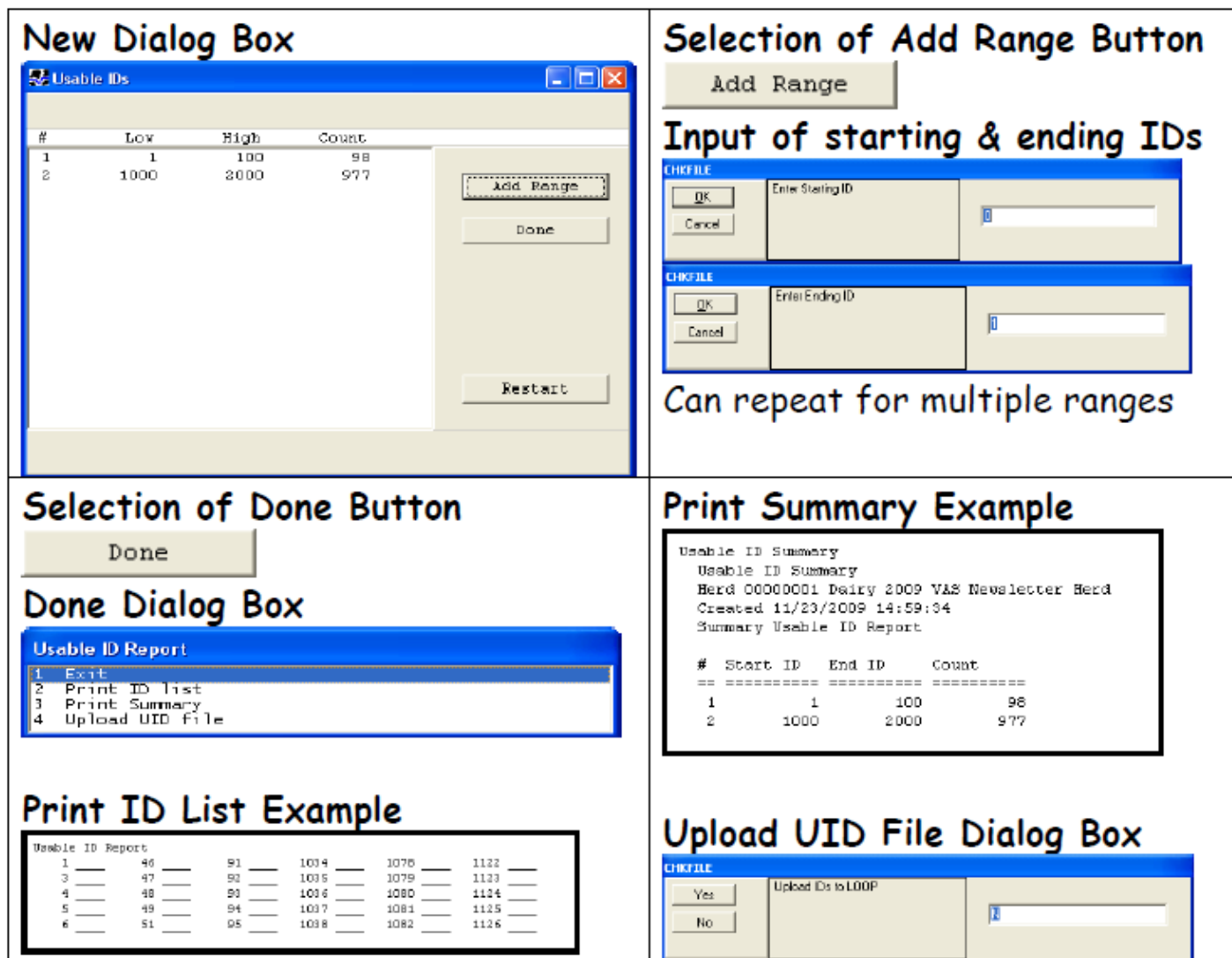


CHKFILE Enhancement – 1 List of Unused ID numbers

Some enhancements have been added to ease the ordering of tags using CHKFILE:

- New dialog box
- Selection of multiple ranges
- List of unused tags
- Summary of unused tags
- Uploading of files for tag orders





The CHKFILE options can be found by going to the FILE menu and selecting the SUPPORT MENU option. In the next menu, select the CHKFILE option to access the above ID option.

CLEANUP Additions

Cleanup now has the option to not clean the ARC files every time you run the CLEANUP process. There is a check box in the CLEANUP screen that if checked (see red arrow in diagram below), you can force Scout to NOT clean the ARC files every time CLEANUP is run. The CLEANUP option can be found under the FILE menu.

If you use the DELETE command to get rid of any animals in the cowfile, you will have to run CLEANUP to finish the deletion process. When you go into CLEANUP, there is now a button (see blue arrow in diagram below) that will allow you to create a list of those animals that are “to be deleted” so that you can verify the list before running a CLEANUP. DELTE is accessed by going to the CowCard command line and typing DELETE in the box. Now type in the cow’s ID number you wish to DELETE.

Last CLEANUP 5/ 4/94				Run CLEANUP
Total Records	1171	To Be Deleted	0	Clean Archive Files
Active	210	May Be Archived	392	Exit
Inactive	55	Available (Free)	514	

☐ Do not clean ARC files every CLEANUP

Settings | Arc Files

Default ARC File drive * (Cowfile Folder C:)

ARC File Size 12000

Minumum Cowfile Size 0

Dead Cow records Removed after 365 days

Dead Heifer records Removed after 365 days

Previous Lact records Removed after 365 days

Show Cows to be deleted

Importing Sire Matings

In the past, the ability to load sire matings into Scout was limited to manual entry of the SIR1 and SIR2 items under the MISC menu. With the new version, we have expanded this menu to give you two options, Manually Enter or Import Matings from File.

Sire Mating Options

- 1 Exit
- 2 Manually enter
- 3 Import matings from file

When selecting option #1 for Manually Enter, you will be prompted for the cow id and then the SIR1 and SIR2 values. If you select option #2 for Import, you will then get a box to appear asking for the name of the file to import. Select the drive, directory and name of the file to import and Scout will load the data based on what is in the file. If the ID in Scout does not match the ID value in the sire mating file, then Scout will try to do the match based on a BNAME lookup. You will need to get the sire mating file sent to you from the bull stud that does the mating. The file needs to be in a CSV format, same as the format most of the bull studs use for the Dairy Comp 305 program.

Pocket CowCard (PCC) for Scout

At the center of both handheld data entry and RFID possibilities is Pocket CowCard, or PCC. PCC is a handheld software program that is paired with Scout. It runs on a Pocket PC and can communicate with Scout through either USB or wireless connections. For most users, this program is easy to learn and understand. Great effort has been put into both data entry ease and protection.

Pocket CowCard comes in three different versions that allow the user to have different abilities with their cow side use. The first version, PCC-Read, allows the user to send their Scout cow data to the PCC program, where the handheld unit can be used cow side for look up purposes only. There is no data entry allowed, but the CowCard data and reports can be viewed. The next version is the PCC-Write, which allows the user to do everything that the PCC-Read version does but the user can now enter data manually into the PCC system at cow side and then upload that data to the Scout program for merging with the computer version of Scout. Lastly, the PCC-Scan version takes what is available in the PCC-Write version but adds the ability to use a RFID scanner and identify cows based on their RFID tag, so that the manual look up is no longer needed. Cows can be scanned right off of a list and the PCC unit can give an audio prompt to the user for a desired action, like preg check, lut shots, BST shots, etc...

The PCC-Scan system would require the user to have the Dairy Comp 305 program, while Scout users can take advantage of both the PCC-Read and PCC-Write versions. All users that have PCC are required to have internet access on the computer running the Dairy Comp 305 or Scout programs. Internet access is used to trouble shoot any issues, do continuous training and setup and to download program updates for the PCC software.

Below are some example screen shots and information on the various parts of the PCC system. To see a demo of how the full PCC-Scan system works, go to our website, www.vas.com and click on the PCC Demo. If you are interested in the cost of any of the PCC systems, please contact the main office at 888-225-6753 and ask for the Sales Department. VAS has various hand held systems, scanners, RFID tags and PCC versions available for your use.

When Pocket CowCard is first opened, the screen that appears provides program version information. Since the versions of Dairy Comp and PCC must be matched for proper communication, web updating Dairy Comp 305 will also download any updates for PCC. At the time the herd is refreshed on the hand-held, the version of Pocket CowCard being used is compared to the latest version downloaded to your computer. If a newer version is waiting to be installed, you will be notified and walked through the process of installing the newer version.

Once you are past the initial startup screen, PCC takes you to the "Herd" screen, which displays a listing of all animals in the herd. To view an animal's data, you can scroll down till you find her number and then tap on her. You can also tap in the Cow ID box and enter the ID of the animal you want to view. Once you have selected an animal, you can then view her CowCard data by clicking on the EVENT, ITEM, TEST, PRV and WK tabs. Each of those tabs represents a section of the cow's CowCard data from Scout.

5685 6:24 ok

191	822	1085	2894
5685	6366	6501	6639
6652	6979	7046	7129
7620	7673	7954	7970
8019	8464	8609	8866
8923	9520	10594	10904
11001	11782	12459	12967
12997	13007	13047	13191
13423	13434	13762	13840
13843	13880	14782	15071
15260	15770	15906	16047

Herd Event Item Test Prv Wk Day

Cow 5685 Idle

Tools Admin

5685 6:28 ok

Date	Event
07/09/10	MAST LR
06/30/10	WELL 15LF
06/30/10	MOVE F040T014
06/27/10	MAST 15LF
05/13/10	MOVE F014T016
04/13/10	MOVE F019T014
02/09/10	PREG 46 DAYS
12/25/09	BRED 11H9508 P 10A
10/26/09	FRESH

Herd Event Item Test Prv Wk Day

Cow 5685 Idle

Tools Admin

5685 6:28 ok

Item	Value
PEN	40
DIM	259
PN	14
MILK	16
LACT	4
DCC	199
RPRO	PREG
RELV	120
DSLH	199
TBRD	1

Herd Event Item Test Prv Wk Day

Cow 5685 Idle

Tools Admin

5685 6:28 ok

Date	DIM	MK	%F	305	SCC	PEN
07/09/10	256	16	0	24560	0	14
06/25/10	242	63	0	26810	0	15
06/11/10	228	67	0	26870	0	15
05/28/10	214	70	0	26850	0	15
05/14/10	200	82	0	27550	0	16
04/16/10	172	96	0	28190	0	14
04/02/10	158	98	0	27710	0	19
03/19/10	144	100	0	27690	0	19
02/03/10	100	116	0	27470	0	7
01/20/10	86	106	0	25270	0	6

Herd Event Item Test Prv Wk Day

Cow 5685 Idle

Tools Admin

FDAT	CDAT	DDAT	TM	TF	ME
10/17/01	12/23/01	08/07/01	10890	0	15010
10/03/01	01/12/01	08/23/01	22700	0	24970
10/21/01	01/18/01	08/24/01	23460	0	25070

Herd Event Item Test **Prv** Wk Day

Cow Idle

Tools Admin

FRESH	OK	RECHK	HEAT
BRED	PREG	OPEN	PREV
MOVE	BULLPEN	DRY	ABORT
DNB	SOLD	DIED	CHECK
CALFVAC	XID	HOSP	MAST
DOWNER	MFEVER	LAME	SPLITS
CYST	UNUSED	INFUSED	TREATS
BLOAT	FEVER	LDA	RDA
OFFFEED	KEYTOS	SCARE	PARALYS
TEAT3	TRIM	SPRING	DOWN
COLI	HRDWARE	PYOTREA	BODY
MISSED	UNUSED5	WELL	STAPH
WEIGHT	FOOTROT	UNUSED1	DIA
CALVING	PULL	UNUSED3	METRITI
RP	EARLYD	TOCLOSE	VACCINE
Ombo Eval	UNUSED2	RUMEN	Cancel

If you have the PCC-Write version, you can tap and hold on the EVENTS page to bring up the above screen that lists all the available events that can be entered on the PCC unit. Tap on the event you wish to enter and then you can follow the prompts to enter the date, remark and any other information. This information can then be “delivered” back to the Scout program for processing and inserting into the cow’s cowcard event page.

One of the most used parts of the PCC program is the ability to do herd check on the hand held system at cow side. With the PCC system, you have access to enter the herd check data as the cow is checked by the vet and you have access to all her events, testdays and other misc. item data while you are examining the cow. The ability to access that data and to then enter the resulting prognosis results in labor savings, time savings and reliability of the data being entered.

To access the vet list (or any other command setup to show on the PCC unit), you can click on the TOOLS button and then on the “command lists” option. From there, you would click on the requested report from the available reports listed and then click OPEN to bring up that list. If the cows are sorted by PEN, then you can select the PEN you want to start with or select ALL to view all cows in numeric or alphanumeric order (see the vet list screen below). Cows that need to be checked will be listed under the TODO tab. Once a cow is selected, she then moves into the vet entry screen, similar to the vet entry screen in Scout. From there, you can select the event and remark for the cow and then select “store” to save that entry. Once the entry is stored, the cow moves to the DONE tab. You can select the DONE tab to review your entries and then click back on the TODO tab to finish the vet list. Once the vet list is all done, tap on the POST button to save the list and make the list ready to be “delivered” to Scout for processing. To do this, click on the TOOLS button, then on the “deliver posts” option to send the entries to Scout.

Vet List, Cows 6:25

ID	VETC	Evt	Rem
11782	NOHT	?	?
12997	PREG	?	?
13762	PREG	?	?
15906	NOHT	?	?
16528	PREG	?	?
18933	CHCK	?	?
19009	PREG	?	?
20504	PREG	?	?

Pens ToDo (8) Done (0) Queue

☐ To Do Taps ☒ Enabled

Exit Post View Rfid

Cow 12997 PREG 6:26

1 Skipped	OVGNRH
2 Recheck	7!MUMMY
3 Ok	PGCONFRM
4 Open	4!ADH
5 Pregnant, Correct Date	OKDRY
6 Pregnant, Other Date	PYO
7 Abort	LUT
8 Other Events	!5 -
Do Not Breed	Other remarks

☐ ☐ ☐

RPRO: BRED DSLH: 55 DIM: 184

DCC: 0 MILK: 76

Ignore Skip Queue

Help View Store

Cow 12997 PREG 6:26

1 Skipped	OVGNRH
2 Recheck	7!MUMMY
3 Ok	PGCONFRM
4 Open	4!ADH
5 Pregnant, Correct Date	OKDRY
6 Pregnant, Other Date	PYO
7 Abort	LUT
8 Other Events	!5 -
Do Not Breed	Other remarks

☒ PREG ☐ ☐

RPRO: BRED DSLH: 55 DIM: 184

DCC: 0 MILK: 76

Ignore Skip Queue

Help View Store

Vet List, Cows 6:27

ID	VETC	Evt	Rem
11782	NOHT	?	?
13762	PREG	?	?
15906	NOHT	?	?
16528	PREG	?	?
18933	CHCK	?	?
19009	PREG	?	?
20504	PREG	?	?

Pens ToDo (7) Done (1) Queue

☒ 12997 PREG ☒ To Do Taps ☒ Enabled

Exit Post View Rfid

Many of the features of the PCC program can be customized by accessing the SERVER\R command from a CowCard command line. From there, you can select the items to be displayed on the ITEMS tab, what events are allowed to be entered from the EVENTS tab, what items are displayed on the vet entry screen and several other options.

Again, you can access a demo of the full PCC program from any of your Scout update CD's or from our website, www.vas.com. Please contact the sales department at the main office (888-225-6753) if you would like some pricing information or have any questions.